

# VCM8

COMPLEMENTING EVERY CORNER

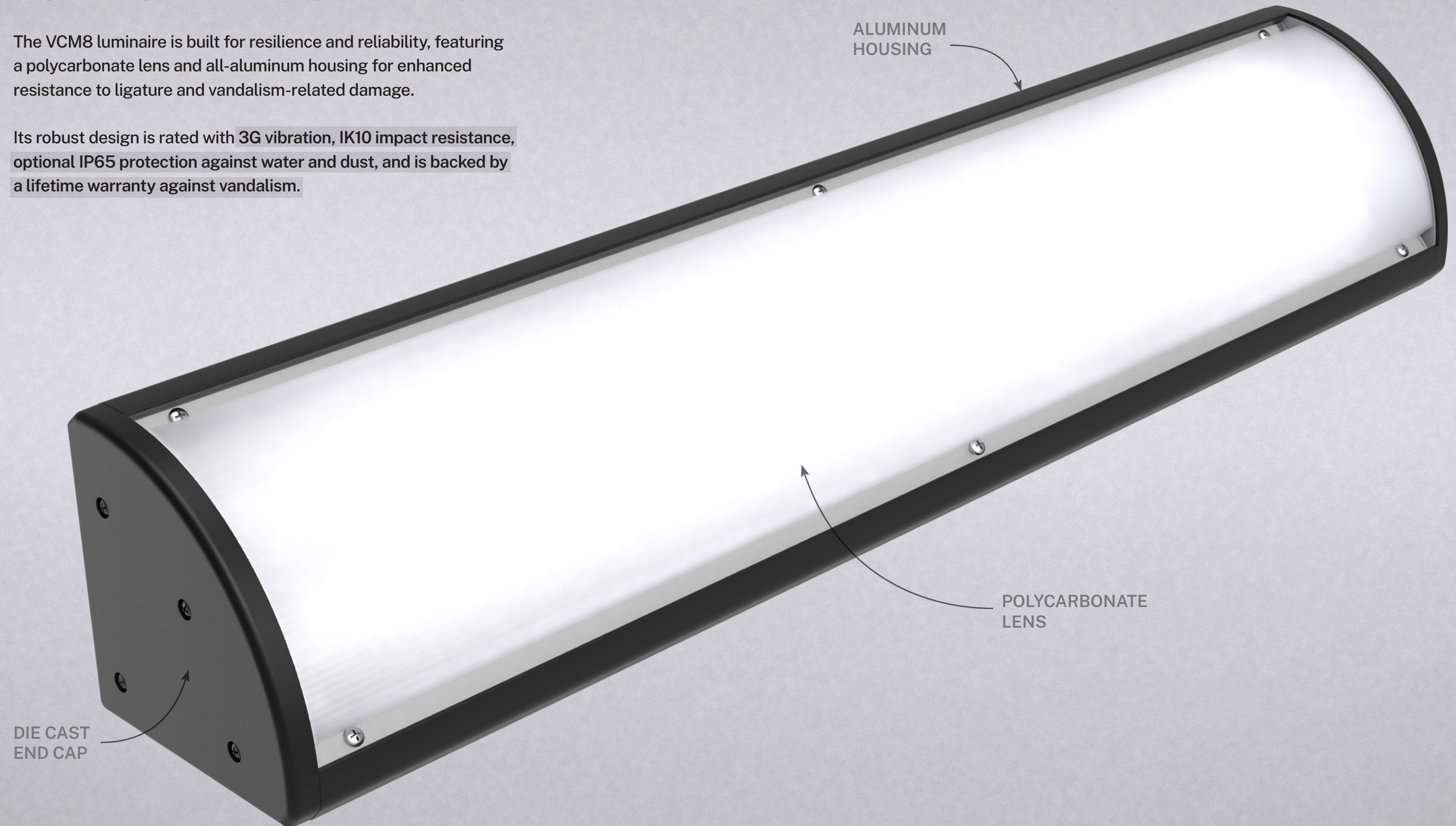
**Luminaire** Led



## BUILT FOR EVERY CHALLENGE

The VCM8 luminaire is built for resilience and reliability, featuring a polycarbonate lens and all-aluminum housing for enhanced resistance to ligature and vandalism-related damage.

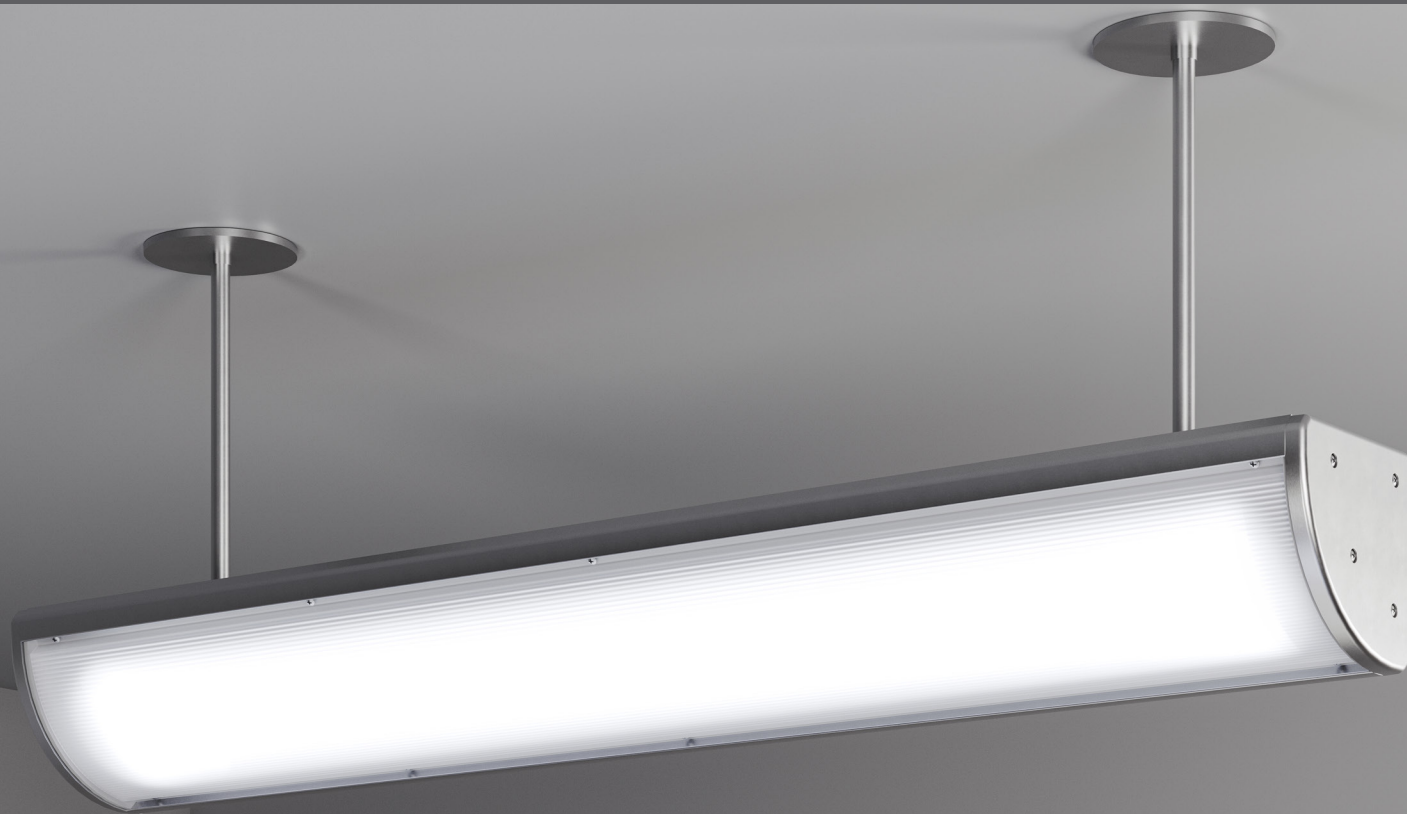
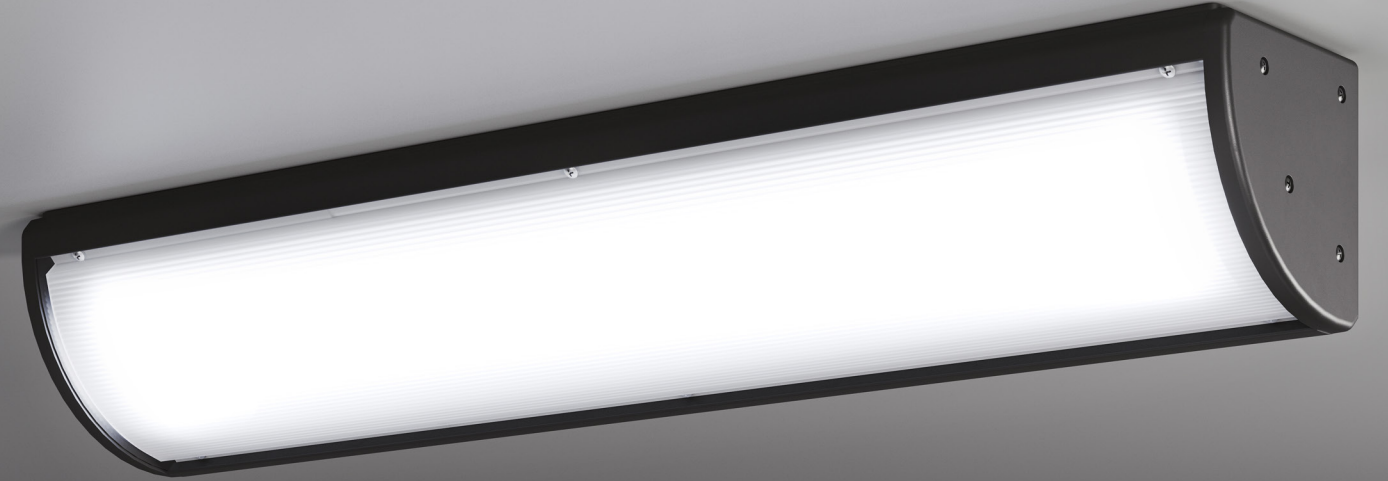
Its robust design is rated with 3G vibration, IK10 impact resistance, optional IP65 protection against water and dust, and is backed by a lifetime warranty against vandalism.





## BUILT FOR EVERY DESIGN

Beyond the standard corner mount application, this luminaire offers flexible installation options, including ceiling, wall, and pendant mounting, and is available in three sizes. It also features a range of finishes, including black, bronze, gray, silver, white, or optional custom colors.





## PUBLIC TRANSPORT

VCM8 is 3G-rated to withstand vibrations commonly encountered on public transport platforms and hubs.



## BEHAVIORAL HEALTH

Featuring soft edges and a **ligature-resistant design**, the VCM8 luminaire meets the requirements of behavioral health facilities.

Equipped with dimming options or a concealed behind-the-lens microwave occupancy sensor, this luminaire offers versatile control. With a CCT range from warm 2700K to cool 5000K, VCM8 helps create a more comfortable and inviting environment where it's needed most.





## NATATORIUMS

VCM8 offers an optional IP65 rating and has successfully passed a 4,000-hour salt spray test. It features a Super Durable Corrosion Resistant (SDCR) powder coat that meets the AAMA 2605 high-performance specification, making it suitable for wet locations like natatoriums.

Its versatile mounting options allow for installation of the same luminaire on various ceiling types, preserving a consistent feel throughout the space.



## BUILT FOR HIGH-ACTIVITY AREAS

The VCM8 luminaire is well-suited for areas with high level of activity and constant movement, where accidental damage may occur. With its durable polycarbonate lens and sleek all-aluminum housing, this luminaire withstands physical and environmental impacts, ensuring long-lasting performance.







## BUILT FOR UNMONITORED AREAS

VCM8's tough build is also designed for areas with limited supervision, where the risk of vandalism is high and proper illumination is necessary.

By integrating a **concealed microwave occupancy sensor**, VCM8 ensures reliable illumination and optimal energy usage in low-traffic areas. As a result, this luminaire is designed in accordance with **ASHRAE 90.1-2010 & IECC 2015**, the energy code regulations, and the **NFPA 101** life safety code requirements for stairwells.







## TESTING & CERTIFICATIONS

- IK10 rated for impact resistance
- IP65 rated for water and dust resistance (optional)
- 3G vibration rated
- Withstands a 4,000-hour salt spray test
- Complies with Buy America(n) Act (BAA) & Build America Buy America (BABA)
- Vandal and ligature resistant
- Lifetime warranty against vandalism

## TECHNICAL SPECIFICATIONS

- Polycarbonate lens
- All-aluminum housing
- Mounting options: ceiling, pendant, and wall
- Size: 2ft, 3ft, 4ft
- Finishes: black, bronze, gray, silver, and white standard finishes, with optional custom colors
- CCTs: 2700K, 3000K, 3500K, 4000K, 5000K
- CRI: 82
- Lumens: up to 11,000
- 120, 277, 120-277V (MVOLT) with optional 347V (option to order it in 347 Volt)
- Dimming to 1%, 10% or Programable Lumen Output driver options. Non-Dimming Driver is also available.
- Optional dual driver for independent LED board operations
- Behind-the-lens microwave occupancy sensor. Field adjustable dimming levels: 10%, 20%, 35%, 50% OCCFA option



# VCM8

COMPLEMENTING EVERY CORNER



[WWW.LUMINAIRELED.ACUITYBRANDS.COM](http://WWW.LUMINAIRELED.ACUITYBRANDS.COM)

One Lithonia Way, Conyers, GA 30012 | Phone: 800.705.7378 | [www.acuitybrands.com](http://www.acuitybrands.com)  
© 2025 Acuity Brands Lighting, Inc. All Rights Reserved.

 **AcuityBrands.**