

LUMINAIRE LED INSPIRATION
**EXPANDING OUR
HORIZONS**

Luminaire *Led* 

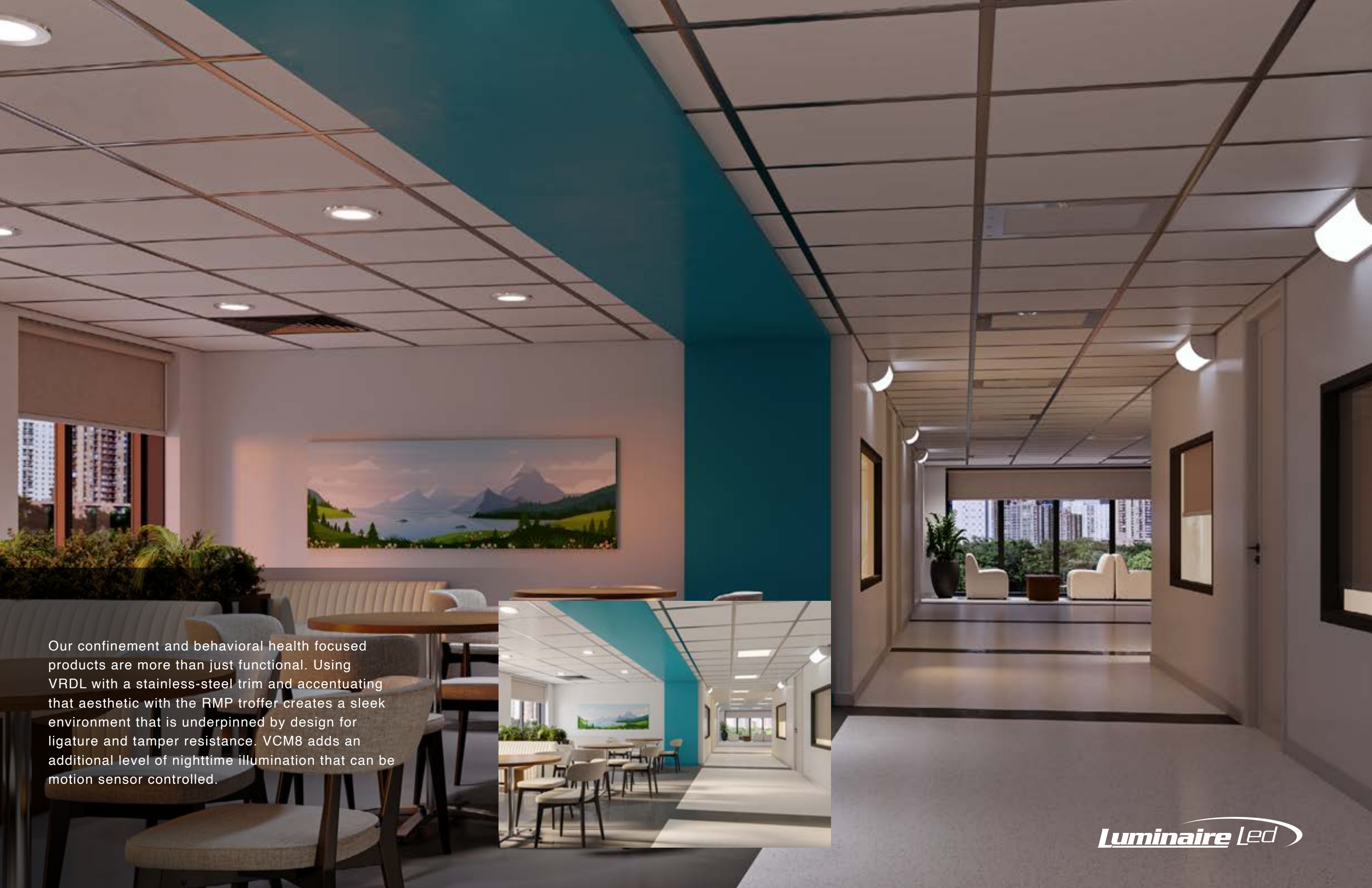
At Luminaire LED we are renowned and trusted for our tough, no nonsense, vandal resistant products. We build our products on a foundation of strength and with an aesthetic that also makes them ideal solutions for applications where these are less obvious benefits. Read on to discover more and be inspired to look at Luminaire LED products in a whole new light!



Luminaire Led

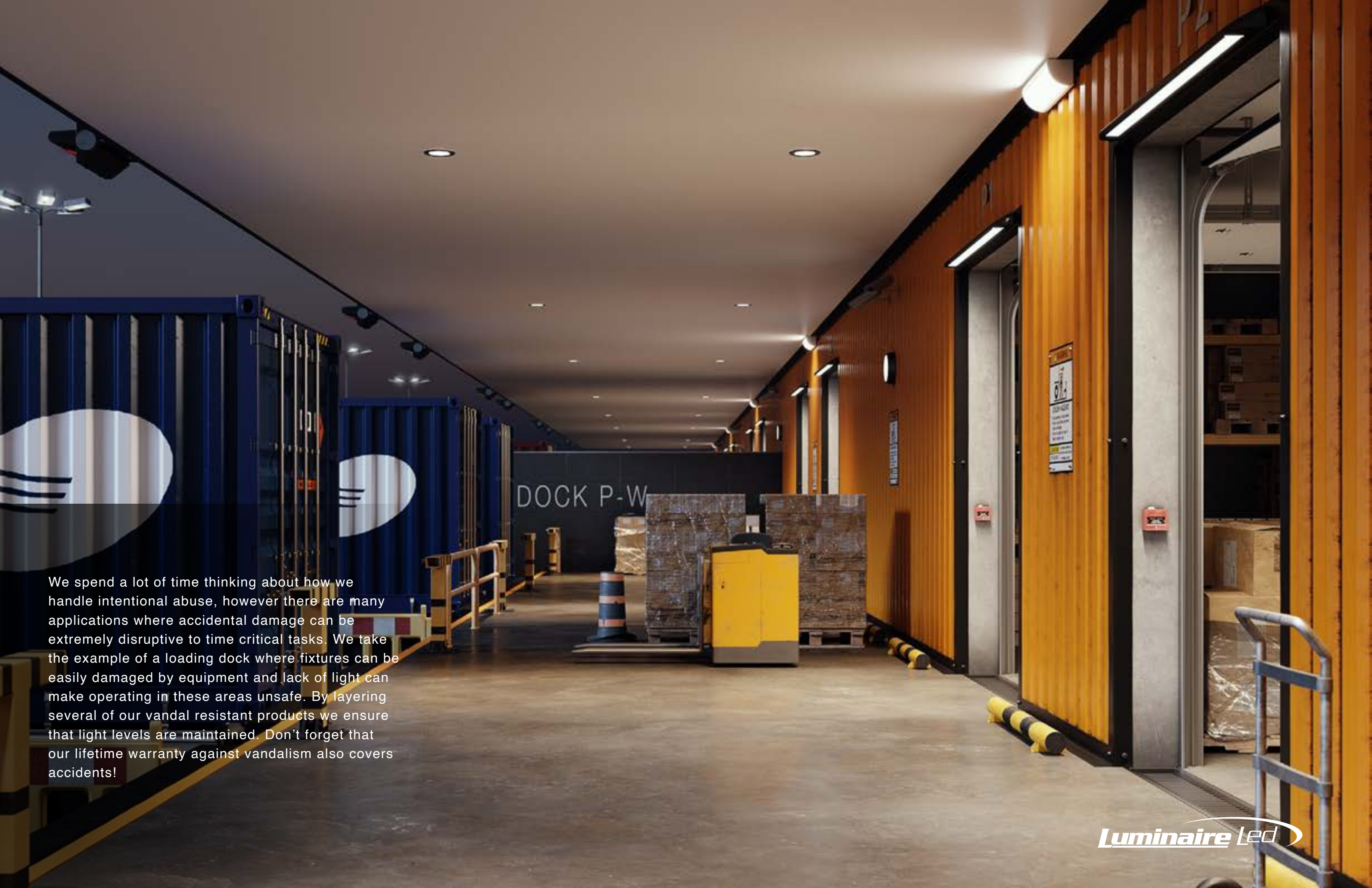


Combining the subtle architectural VRDL which lights the space and disappears, and the bold wall mounted ARV and SWP families. Both keep a space lit while resisting attempts to make it dark. Consider the versatile VCM8 with motion detection and a tough corner mount that makes it really difficult to tamper with. We can make taking money out of an ATM as pleasant an experience as it will ever be!



Our confinement and behavioral health focused products are more than just functional. Using VRDL with a stainless-steel trim and accentuating that aesthetic with the RMP troffer creates a sleek environment that is underpinned by design for ligature and tamper resistance. VCM8 adds an additional level of nighttime illumination that can be motion sensor controlled.





We spend a lot of time thinking about how we handle intentional abuse, however there are many applications where accidental damage can be extremely disruptive to time critical tasks. We take the example of a loading dock where fixtures can be easily damaged by equipment and lack of light can make operating in these areas unsafe. By layering several of our vandal resistant products we ensure that light levels are maintained. Don't forget that our lifetime warranty against vandalism also covers accidents!



Here we are looking at using the Vison VPF4 for its sleek design, but also because of its ability to resist knocks (intentional and otherwise!). The vandal resistant fixture features an all-aluminum, ligature resistant construction which allows it to be used in any environment. Optional Bluetooth connected occupancy sensors can be mounted discreetly behind the lens for a clean fixture appearance. The VPF4 4-inch-wide fixture is available in four lengths and in 2700K, 3000K, 3500K, 4000K, 5000K or Amber.

When you want to make a statement that you won't be putting up with bad behavior, where else to do it but a school! Here we have layered the VRDL with corner mount CMP or VCM8 fixtures. Creating a tough, vandal resistant solution that will survive any high school experience!

CMP

VCM8

Luminaire Led

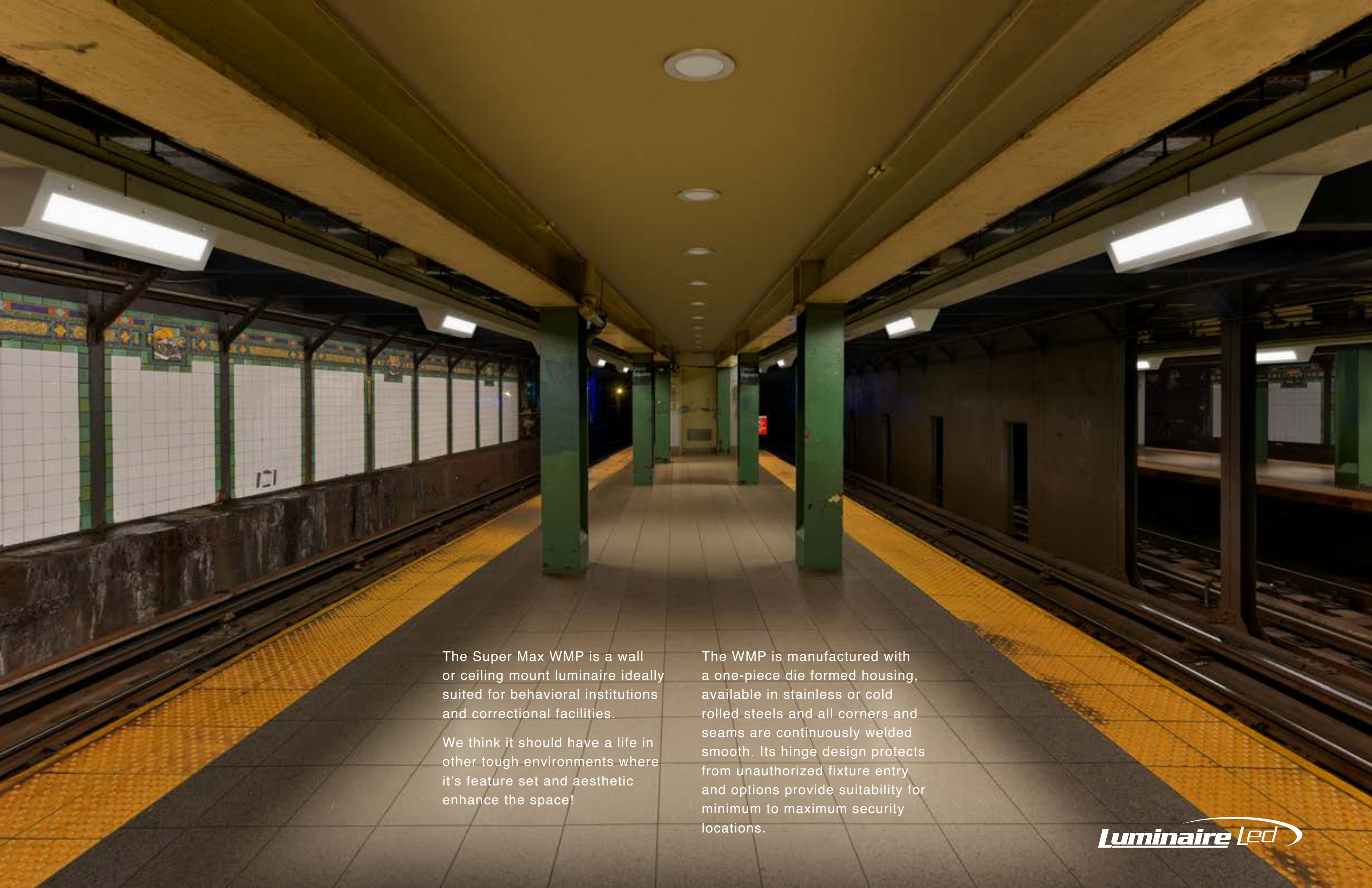
TSL9



VCM8

Stairwells are an application that we have excelled at over our nearly 50 years building tough luminaires. Almost every building where our products are used has a need for stairwell solutions and we have three, all with sensors and all tough vandal resistant products. Consider our tried and tested Endeavor and TSL9 fixtures and we encourage you to investigate the VCM8 as a sleek new corner mount solution.

Luminaire Led



The Super Max WMP is a wall or ceiling mount luminaire ideally suited for behavioral institutions and correctional facilities.

We think it should have a life in other tough environments where it's feature set and aesthetic enhance the space!

The WMP is manufactured with a one-piece die formed housing, available in stainless or cold rolled steels and all corners and seams are continuously welded smooth. Its hinge design protects from unauthorized fixture entry and options provide suitability for minimum to maximum security locations.



An opportunity to use the aesthetic of the Super Max series, RMP recessed and the CMP corner mount. This isn't all about looks though, these products are rated for damp or optionally wet locations. Field accessible with hinged design allowing for component replacement if required, without disturbing ceiling structure and contaminating the space.



Using the Super Max WMP on a ceiling in a carpark, making a no-nonsense statement, always there to keep the space lit! We accentuate it with the sleek VPF mounted on columns between spaces. Use the integrated motion sensor to create an extra temporary layer of light while the space is occupied.



A combination of products chosen for their aesthetic and the added layer of strength that Luminaire LED is known for. VRDL in the canopy, IP66 and IK10, VCM8 tucked away on corners, IP65 and IK10, and a doorway that is cleanly lit by our IP66 SWP1212 and our AEL egress solution. Everyone of these built to resist vandalism and keep the space lit making your store always look great!

WHERE WILL YOU DESIGN
WITH LUMINAIRE LED
NEXT?



WWW.LUMINAIRELED.ACUITYBRANDS.COM

One Lithonia Way, Conyers, GA 30012 | Phone: 800.705.7378 | www.acuitybrands.com
© 2024 Acuity Brands Lighting, Inc. All Rights Reserved.

